



J. P. Mascaro & Sons

If it's service, it's us!

2650 Audubon Road
Audubon, PA 19403

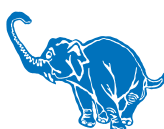


West Pottsgrove Township

WASTE COLLECTION SERVICE INFORMATION



RECYCLING COLLECTION EVERY OTHER WEEK STARTS JANUARY 14TH



J. P. Mascaro & Sons

If it's service, it's us!

800-334-3403

www.jpмасcaro.com

WEST POTTS GROVE TOWNSHIP COLLECTION INFORMATION

Trash Collection

Trash collection will occur one (1) time per week on **Wednesday** in 96 gallon wheeled cart. All waste containers must be placed at the curb no later than 6 a.m. Please leave 4 feet of space between the carts, trees, mailboxes, poles, etc. Trash and recycling are not to be placed out for collection earlier than 6:00 p.m. the evening before scheduled collection date.

Recycling Collection

EVERY OTHER WEEK! (1/14)

Recycling will be collected every other week on **Wednesday** in 64 gallon wheeled carts with recycle symbol. Please place all clean recyclables loosely in the 64 gallon cart and place at the curb no later than 6 a.m.

These Flexible Plastic Items can now be Recycled. Put these items in your recycling carts. Flexible plastic packaging from these products can now be recycled. Use the below list as a guide and stop throwing away what now can be recycled. All these packaging types can be placed in your recycling carts for recycling.



What Can be placed out as Recyclables?

- Paper and Cardboard
(no books, no contaminated pizza boxes)
- Wax Cartons: milk, juice, soup, flavored drinks and cartons can be recycled.
- Aluminum
- Glass (no window glass, mirrors or light bulbs)
- Plastics #1- #7 (no toys, styrofoam or ceramics)

Bulk Item Collection

Bulk items are collected once a month on the last collection day (Wednesday). This includes furniture, mattresses and box springs (**must be wrapped in plastic**) and other large household items. **No tanks, tires, drums, automobile parts, riding mowers, or any item that contains fuel or fluids. NOTE:** Items containing Freon or CFCs must have freon or gas removed and be tagged by a professional removal service before disposal.

Billing Information

Billing for trash and recycling collection will be conducted by West Pottsgrove Township. If you have any questions regarding your bill please contact West Pottsgrove Township (610) 323-7717.

Household Hazardous Waste NOT ACCEPTED!

Toxic chemicals, pesticides, oil-based paints, weed killers, automotive batteries, fuels, or fluids must be disposed of properly at a Household Hazardous Waste Collection event. Refer to the Montgomery County Recycling website for options.

E-Waste Alert! Disposal Ban

Solid waste disposal facilities in Pennsylvania are no longer allowed to accept covered devices such as televisions and computer devices including hard drives, monitors, keyboards, mice and printers or their components.

Holiday Schedule

If a holiday is on or before your scheduled collection day (**Wednesday**) then your collection will take place one day late (**Thursday**). **Holidays:** New Year's Day (January 1), Memorial Day, Independence Day (July 4), Labor Day, Thanksgiving Day, and Christmas Day (December 25).

Recycling Collection Information

Below are examples of what can be placed in your new recycling container. If you have any questions about what can be recycled please visit our website at www.jpмасcaro.com

Paper, Cardboard, Magazines & Junk Mail



Boxes & Cartons



Paper & Plastic cups



Flattened Cardboard



Newspaper



Phone books



Empty paper bags



Mail, Magazines, Mixed paper

Plastic #1-#7

Plastic food containers



Plastic bottles (all colors)



Plastic plant pots



Pill bottles
(no prescription vials)



Lids (wider than 3 in.)

Glass



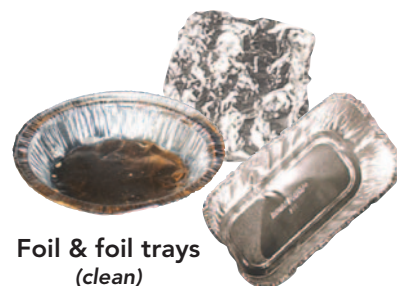
Bottles & Jars

Metal



Aluminum & metal cans

Foil



Foil & foil trays
(clean)

January 2026						
Su	M	Tu	W	Th	F	Sa
				H	2	3
4	5	6	7	8	9	10
11	12	13	14	15	16	17
18	19	20	21	22	23	24
25	26	27	28	29	30	31

February						
Su	M	Tu	W	Th	F	Sa
1	2	3	4	5	6	7
8	9	10	11	12	13	14
15	16	17	18	19	20	21
22	23	24	25	26	27	28

March						
Su	M	Tu	W	Th	F	Sa
1	2	3	4	5	6	7
8	9	10	11	12	13	14
15	16	17	18	19	20	21
22	23	24	25	26	27	28
29	30	31				

April						
Su	M	Tu	W	Th	F	Sa
			1	2	3	4
5	6	7	8	9	10	11
12	13	14	15	16	17	18
19	20	21	22	23	24	25
26	27	28	29	30		

May						
Su	M	Tu	W	Th	F	Sa
					1	2
3	4	5	6	7	8	9
10	11	12	13	14	15	16
17	18	19	20	21	22	23
24	H	26	27	28	29	30
31						

June						
Su	M	Tu	W	Th	F	Sa
	1	2	3	4	5	6
7	8	9	10	11	12	13
14	15	16	17	18	19	20
21	22	23	24	25	26	27
28	29	30				

July						
Su	M	Tu	W	Th	F	Sa
			1	2	3	H
5	6	7	8	9	10	11
12	13	14	15	16	17	18
19	20	21	22	23	24	25
26	27	28	29	30	31	

August						
Su	M	Tu	W	Th	F	Sa
						1
2	3	4	5	6	7	8
9	10	11	12	13	14	15
16	17	18	19	20	21	22
23	24	25	26	27	28	29
30	31					

September						
Su	M	Tu	W	Th	F	Sa
		1	2	3	4	5
6	H	8	9	10	11	12
13	14	15	16	17	18	19
20	21	22	23	24	25	26
27	28	29	30			

October						
Su	M	Tu	W	Th	F	Sa
				1	2	3
4	5	6	7	8	9	10
11	12	13	14	15	16	17
18	19	20	21	22	23	24
25	26	27	28	29	30	31

November						
Su	M	Tu	W	Th	F	Sa
1	2	3	4	5	6	7
8	9	10	11	12	13	14
15	16	17	18	19	20	21
22	23	24	25	H	27	28
29	30					

December						
Su	M	Tu	W	Th	F	Sa
		1	2	3	4	5
6	7	8	9	10	11	12
13	14	15	16	17	18	19
20	21	22	23	24	H	26
27	28	29	30	31		

 **Trash**
 **Recycling**
 **Bulk Item**
 **Yard Waste collection**
 (April, May, October, November)

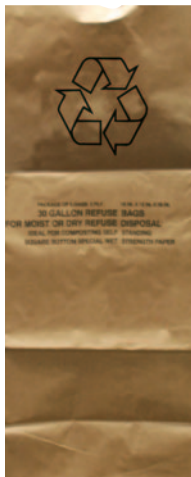
Holiday Collection

If there is a holiday on or before Wednesday, collection will occur on Thursday. If there is a holiday that lands on a Saturday or Sunday, collections will remain as normal collection schedule.

Holidays: New Year's Day (January 1), Memorial Day, Independence Day (July 4), Labor Day, Thanksgiving Day and Christmas Day (December 25).

Yard Waste and Leaf Collection

Yard waste will be collected during the months of April, May, October and November. Yard waste will be collected every week on Wednesdays only during these months.



Use only compostable paper bags or open top containers. Each container or bundle cannot exceed the weight limit of 50 lbs. Place yard waste out the night before. Leaves may be placed in open-top containers or compostable paper bags.

NO PLASTIC BAGS!

- **ACCEPTABLE ITEMS:** Tree trimmings up to 2 inch in diameter and 4 feet in length. Shrubbery and hedge trimmings, prunings, garden waste.
- **UNACCEPTABLE ITEMS:** No tree roots. Branches can be no longer than 4 ft. in length or 2 inch in diameter.