

Pioneer Crossing Landfill provides environmentally safe solid waste disposal. It is a key element in our region's infrastructure, serving homes, schools, hospitals, businesses and industry.

Welcome to our tour!



**Dedicated to J. P. Mascaro, Sr. and Ida Mascaro**



# Advantages

## Environmental Protection

State-of-the-art environmental protection systems.  
Pioneering internal environmental compliance program.  
Groundwater protection, stormwater management and energy recovery systems. Fully bonded and insured.

## Community

Host community and abutting community agreements with substantial financial and social benefits to those communities. Citizens advisory committee. 24 hour environmental hotline, 800-431-3336.

## Capacity

Long term permits and 20 years disposal capacity. Daily capacity: 1,550 tons.

## Access

Direct transportation routes over major highways.  
Paved internal roads. Fast turn scale and disposal operation. Truck wash-out facilities.

## Engineering

Managed by full-time on-site licensed professional engineers. Designed to exceed all state, federal and industry standards.

## Management

Professional in-house environmental staff for generator approvals. Waste stream reporting and testing. Job specific billing.

## Infrastructure

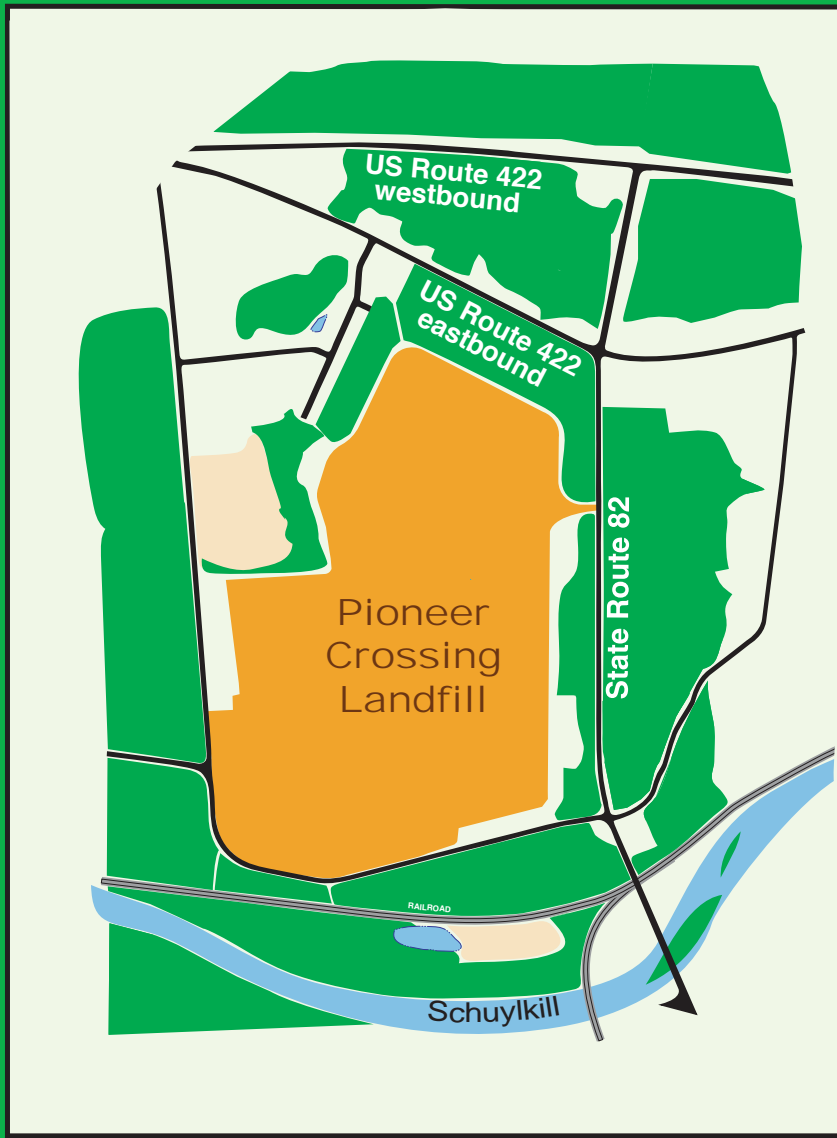
On site construction crews and equipment. On site, fully staffed heavy equipment maintenance shop.



Restored wetland, Pioneer Crossing Landfill



# Location! Access!



Located near Reading, PA, a quarter mile from a four-lane US highway with quick access to the Interstate Highway system.

# Operations

Dual computerized scales, inbound and outbound. Fast turn disposal operation. Truck wash-out facilities. On site heavy equipment maintenance facility and redundant landfill equipment assure uninterrupted operation.





# Paved Roads

**All internal traffic roads are paved and meet full highway standards at Pioneer Crossing.**

This increases safety, improves traffic flow, greatly reduces dust and noise and allows faster unloading of customers' trucks.





# Infrastructure

We have skilled, trained and fully equipped construction and maintenance crews, heavy and light equipment and electrical maintenance shops.

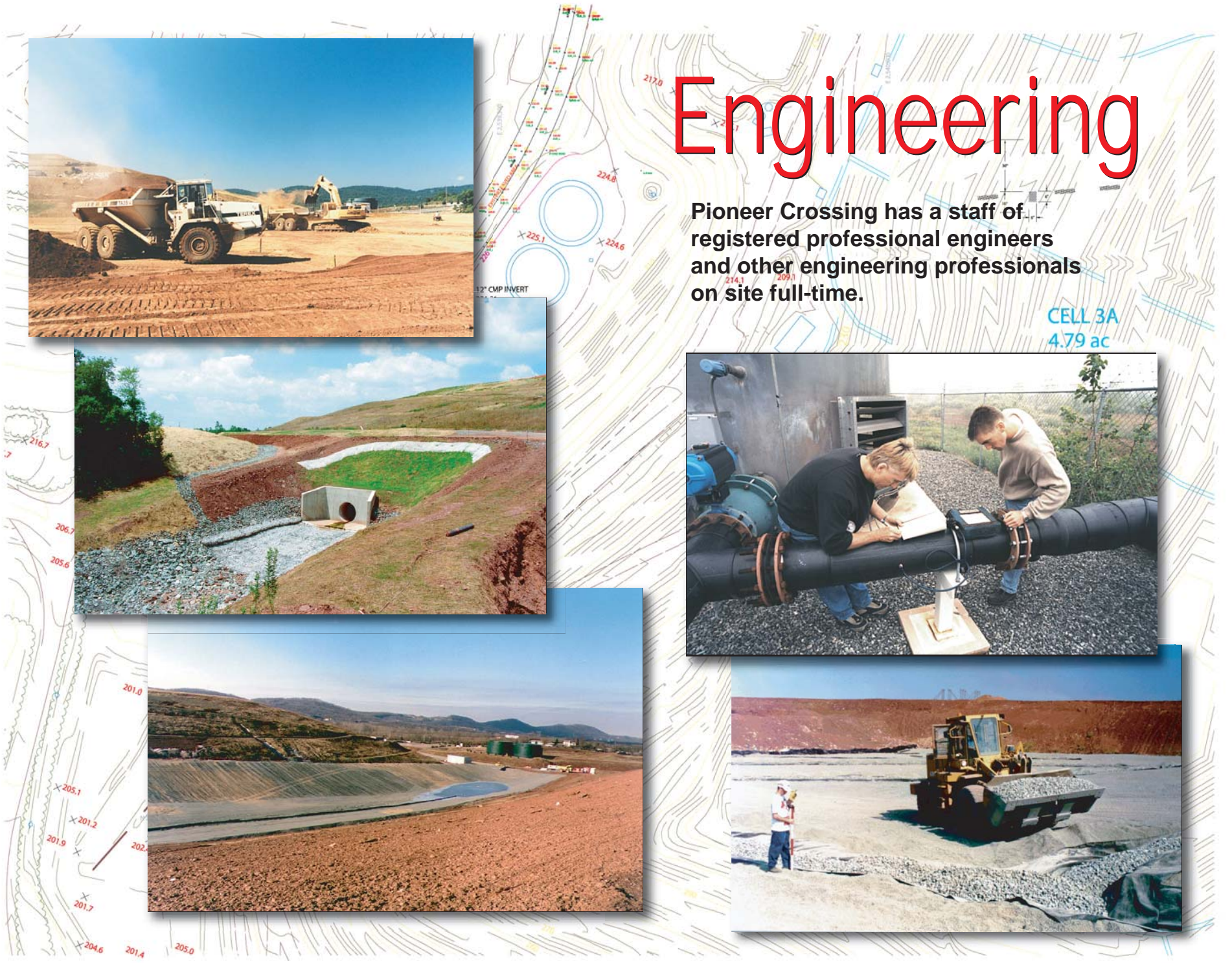




# Engineering

Pioneer Crossing has a staff of registered professional engineers and other engineering professionals on site full-time.

CELL 3A  
4.79 ac



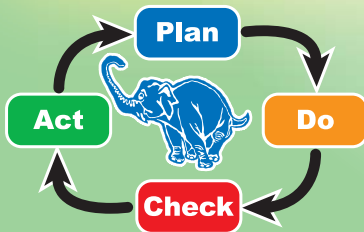


# Environmental Compliance

Pioneer Crossing has an environmental management system second to none. While highly trained environmental professionals monitor all aspects of landfill operations, everyone working at the landfill is involved.

From verifying waste types, to inspecting gas lines to collecting litter to sweeping mud from the roads, everyone pitches in! And everyone shares in the bonuses for 100 percent environmental compliance.

To learn more about our environmental programs, visit [www.jpмасcaro.com](http://www.jpмасcaro.com)!





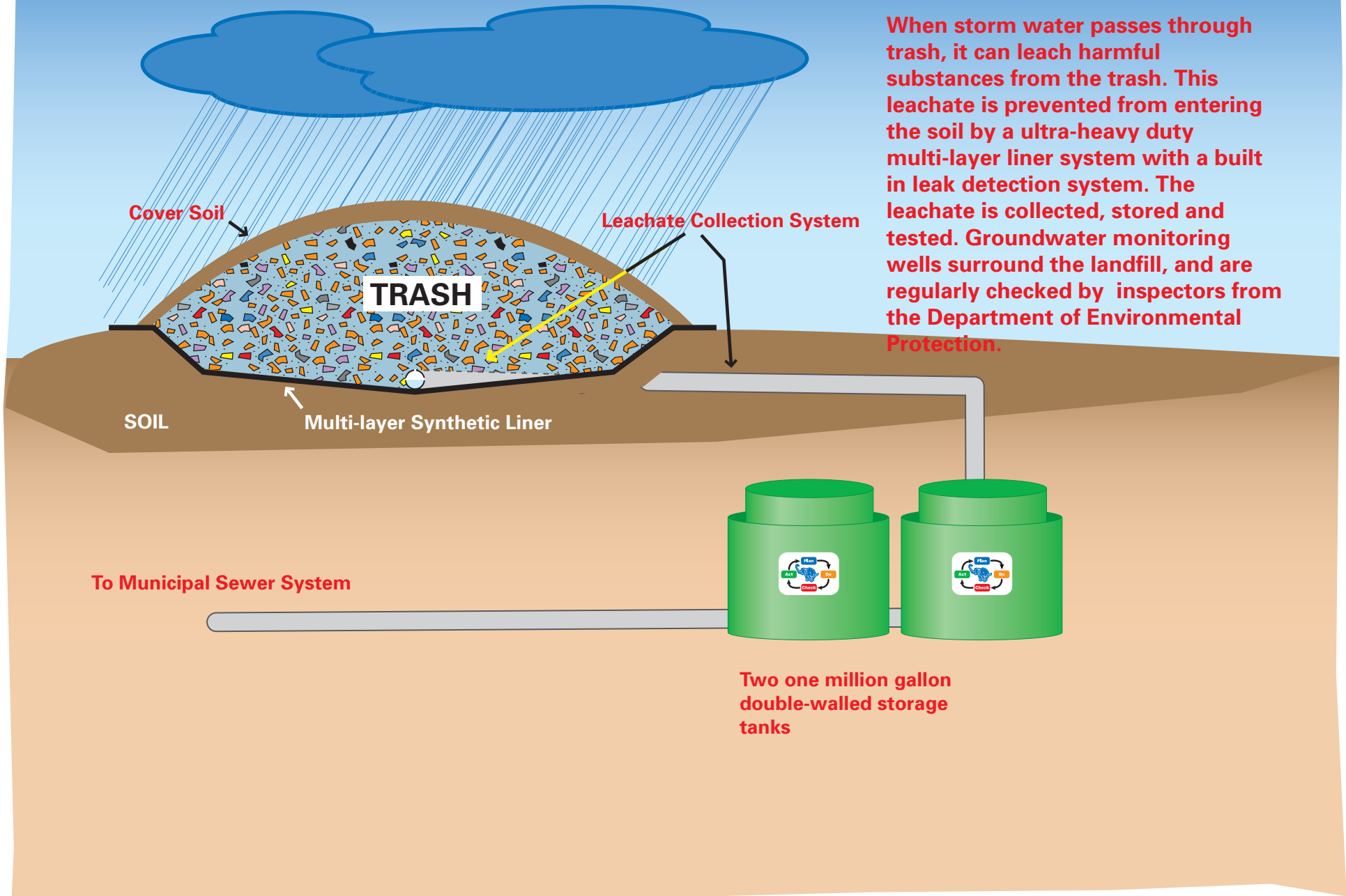
# Cleanliness

Every effort is made to keep Pioneer Crossing clean and litter free. An extensive employee training and motivational program is used. From the automated tire wash that all trucks use, to the street sweeper, to the litter crews, to the litter fencing, nothing is spared to keep our landfill as clean as the cleanest of parks!





# Groundwater Protection

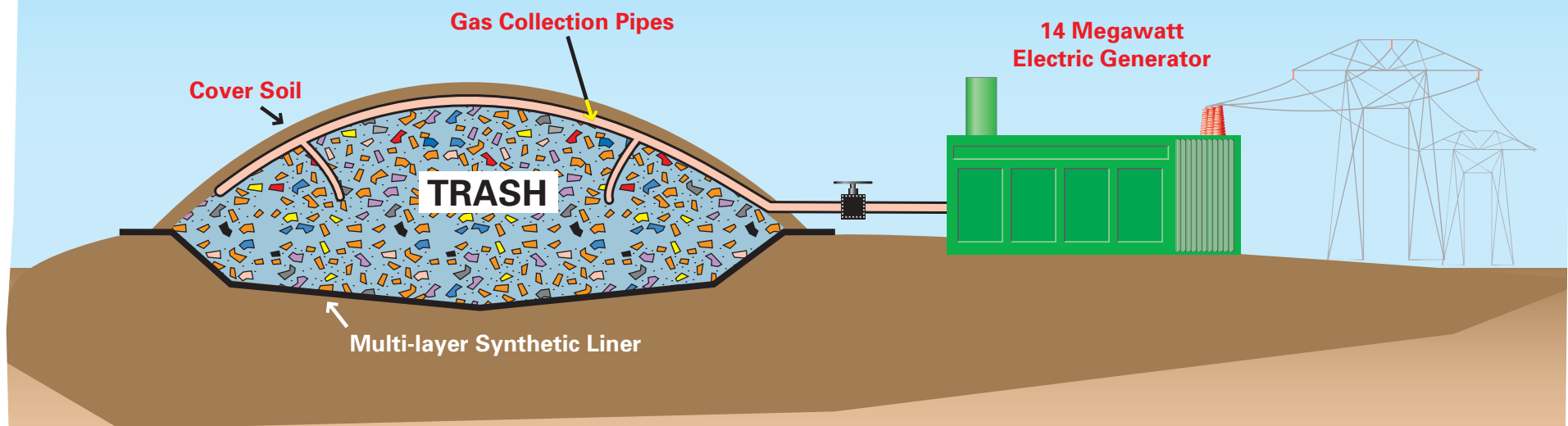


When storm water passes through trash, it can leach harmful substances from the trash. This leachate is prevented from entering the soil by a ultra-heavy duty multi-layer liner system with a built in leak detection system. The leachate is collected, stored and tested. Groundwater monitoring wells surround the landfill, and are regularly checked by inspectors from the Department of Environmental Protection.

Two one million gallon double-walled storage tanks



# Gas Recovery & Reuse



Trash generates methane gas when it decomposes in the landfill. Methane is the principal component of natural gas. Thus, landfill gas has great utility as a fuel. The gas is collected by a network of collection pipes and brought to a central location where it is monitored, measured and filtered. Pioneer Crossing Landfill plans to bring on line a 14 megawatt electric generation plant, sufficient capacity to provide power for 10,000 homes.



# In the future...



## Ida E. Mascaro Recreation Park

The landfill will become a recreation park with walking trails, ball fields, tennis, basketball, horseshoes, shuffleboard, bocce, picnic pavilions and observation platforms. When Pioneer Crossing Landfill is filled and capped (in about 20 years), it will become a public recreational park that all the community can enjoy. It will be named in honor of Ida E. Mascaro, wife of the late J. P. Mascaro, Sr., founder of J. P. Mascaro & Sons. *Click here for more information, including high quality printable maps of the facility.*